

## Overview of building use

- You are welcome may use the tables, chairs, and equipment in the Parish House. Applicant agrees to return the facilities to the condition which existed prior to use.
- Any damage to church property must be reported to the Rector immediately.
- Trash removal and clean up as outlined in the rental agreement. Vestry reserves the right to assess fees if clean-up not complete.
- Only beer and wine are permitted in the building; “hard liquor” is not allowed.
- For events with children and teens, appropriate adult supervision is required.

Applicant agrees to assume all risk of and responsibility for, and agrees to indemnify, defend, and save harmless All Saints’ Episcopal Church, its employees, officers, and members from and against any and all claims, demands, suits, actions, recoveries, judgments and costs and expenses in connection therewith on account of the loss of life, property, or injury or damage to the person, body or property of any person or persons whatsoever, which shall arise from or result directly or indirectly from the use of the premises described in this Agreement.

## All Saints’ Church

15 Basking Ridge Road  
Millington, NJ 07946

At the 5-way intersection  
of Long Hill Road,  
Basking Ridge Road,  
Church Road,  
and Old Forge Road.

Cover:

*Our new entry foyer  
of the Parish House.*

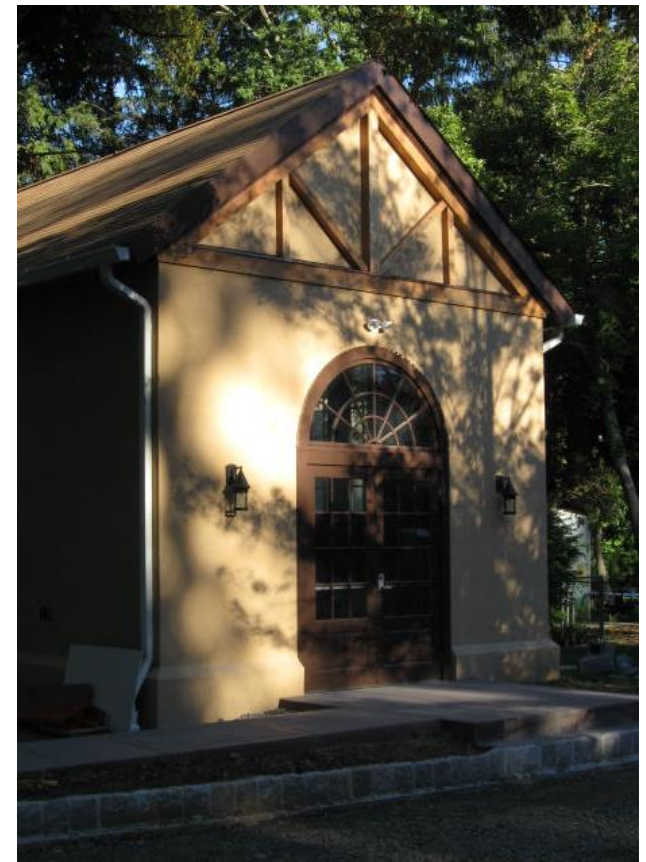
*Side entry  
of the  
Parish House  
to upper  
level.*



phone (908) 647-0067

website [www.allstsmillington.org](http://www.allstsmillington.org)

email [allstsmill@hotmail.com](mailto:allstsmill@hotmail.com)



We welcome you!

**Parish House Use**  
by our Community Neighbors

## All Saints’ Church

*Building a joyful community of  
faith in Christ through worship,  
learning, praise & service.*

*Community meetings, birthday parties, baby & wedding showers, graduation parties & family events are all welcome.*

## Rental rates

### Private Parties

Upper level: \$60 per hour

Lower level: \$45 per hour

Entire building: \$100 per hour

### Kitchen Use (for use with a rental)

Flat fee per use \$45

### Church Members

Upper level: \$35 per hour

Lower level: \$25 per hour

Entire building: \$60 per hour

### For Community Service Groups – Free

*At the discretion of the church*

**A security deposit of \$100 will reserve a rental time.**

**The deposit will be returned after the room has been inspected.**

## A place for celebration & connection

Just across the street from the church is our Parish House. It is our primary gathering space for parish and community events. Both levels of the Parish House are now handicap-accessible.

The **upper level** of the Parish House is a large 30'x50' room with a kitchenette and two ADA-compliant bathrooms. You are welcome to use our ten 8'foot folding tables, five 6' round tables and 60 chairs.



*The upper level accommodates up to 100 people.*



The **lower level** is a 30'x40' space; with a full kitchen. There is one small bathroom on this level. There are eight tables and 40 folding chairs available to use.

*The lower room accommodates up to 60 people.*

The **Kitchen** in the lower level has been fully-renovated with new cabinets, countertops and sinks. It is equipped with two stove /oven units, two sinks, and a gigantic center prep island. You are welcome to use the pots, dishes, and utensils. All dishes must be washed and returned to their shelves after use.

**Both the upper and lower floors have air-conditioning units.**

**Call to schedule a visit and see the space. (908) 647-0067**